

# The NIMBLE THIMBLE

www.nbqa.org



Hello to My Fellow Quilters!

I hope everyone is enjoying their summer and this gorgeous weather. And, hopefully, getting some sewing done as well. Since I am not one to write about myself extensively, I thought it might be more interesting to have you talk about what you did "on your summer vacation."

So, let me tell you about mine. For the past 65 plus years, my husband's family has been traveling to Ocean City, New Jersey. They come from all over the country, and this year we had family from London and Mexico. What a great blend! We converge onto Ocean Avenue (renting much of the street) and are also known as the noisiest fun-loving group on the beach. The ages run from 18 months to 80 years of age.

Always on Saturday night (our first night there) we order from an Italian restaurant that has been there for years. As we all start ordering, the familiar sound rings out – "the Macera's are here." So, it makes us feel welcome. The next day we hear from our grandchildren, "when can we go on the Boardwalk?" Well, the rides, the mini-golf, the restaurants, the shops, all are right there. We rent a surrey (triple size) to hold all ten of us and off we go.

The memories we make! Our grandchildren talk about it all year long, and count down the months until we can go back again.

Now, it's your turn. Please send in your summer vacation stories to share ([pweston528@gmail.com](mailto:pweston528@gmail.com)). I know I will so love to hear them.

Gail

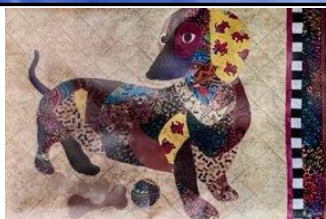


## Board Meeting

September 1, 2022, 6:30 pm  
Louise's Quilt Shop  
Island Creations by Louise  
74 Nooseneck Hill Road  
West Greenwich, RI

## General Meeting

September 15, 2022, 6:30 pm  
East Greenwich United Methodist Church  
1558 South County Trail  
East Greenwich, RI



NARRAGANSETT BAY  
QUILTERS ASSOCIATION

EDUCATION  
COMMITTEE

The May activities of the Education Committee were quite varied. Early in the month we held a Redwork activities workshop for teens at the Cranston Public Library. Later in the month we had a table at the Kingston Village Fair, where we sold tickets for the raffle quilt and handed out NBQA information and membership applications. Committee plans for the summer include appearing at several local farmers' markets to promote our organization, as well as working on making new kits to hand out at the October Quilt Show. We are also deciding what activities we will be offering during the fall, and at our month-long NBQA display at the Cranston Public Library in December.

Please contact Peggy Ann Lane ([drpalane@cox.net](mailto:drpalane@cox.net)) if you are interested in participating in our activities. We enjoy welcoming new people and new ideas!

## **SHOP HOP RETURNS!!**

The Schoolhouse Shop Hop is on again this year! Grab your friends and plan a trip (or two)! The Hop begins on Tuesday July 5<sup>th</sup> and continues until July 30, 2022.

**Participating shops are :**  
**Red Barn Sewing and Yarn Center**  
**Cobblestone Quilts**  
**The Quilted Crow**  
**Quilted Threads**

Each shop has its own business days and hours. Please check the Schoolhouse Shop Hop information that can be found at each participating shop. The Schoolhouse Shop Hop information can also be found on Facebook under that name.

Registration is done at each shop. The \$8.00 "tuition" will give you a Guidebook with shop information, your first free quilt pattern, and a tote bag (while they last).

When you visit each shop you should have your guidebook stamped, and you can enter the weekly drawing at that store. You will collect a free fat quarter and another free quilt pattern (each shop chooses a different pattern). There are shop hop kits available at each shop for the primary shop hop quilt kit and for their second free pattern.

When you complete your hop by visiting all four shops, you will have "graduated" and you will receive a graduation gift and a coupon for a 20% off shopping spree, to be used later at ALL four shops. You will also be eligible for the grand prize drawing.

It is always fun to visit the shops and to see what is new!

## **BLOCK OF THE MONTH AND STRIP EXCHANGE IS BACK FOR SEPTEMBER!!**

Please submit at the September 15, 2022 General Meeting:

**Strips for September:** Children's themed fabric, 2 ½" by width of fabric

**Block of the Month for September:** Half square triangle blocks, 6 ½" UNFINISHED size.

You will receive one ticket for prizes per (2) strips or (1) square submitted.

## **ORIENTATION FOR NEW MEMBERS**

There will be an orientation for new members August 25, 2022, 6:30 pm at the East Greenwich United Methodist Church, 1558 South County Trail, East Greenwich, Rhode Island. All are welcome.



## LOCAL QUILT SHOWS



**QUILTFEST**  
**NEW ENGLAND**  
**AUGUST 11-13, 2022**

[www.quilfest.com](http://www.quilfest.com)  
QUILT CREDIT: Unfurling by Frieda Lindley Anderson

**QUILTFEST**  
**NEW ENGLAND**

PO Box 667 | New Hope, PA 18938

View all show information, competition, workshops & lectures on our website: [www.quilfest.com](http://www.quilfest.com)

- Over 400 Quilts & Textile Art on Display
- Demonstrations • Workshops & Lectures
- Appraisals • Fabulous Merchants Mall

**JURIED & JUDGED QUILT COMPETITION**

**GENERAL ADMISSION**

**\$15 INCLUDES RE-ADMIT**  
**Thursday - Saturday 10:00am - 5:00pm**  
• ACCOMPANIED CHILDREN UNDER 16 ARE ADMITTED FREE

**MASSMUTUAL CENTER, SPRINGFIELD, MA**  
1277 Main St, Springfield, Massachusetts 01103

2022 Instructors  
Cristina Arcenegui Bono, Esterita Austin,  
Joyce Hughes, Marge Tucker, Adele Scott,  
Beth Helfter, Mary Walter

**VISIT US ONLINE & LEARN MORE!**

**[WWW.QUILTFEST.COM](http://WWW.QUILTFEST.COM)**



**MERRIMACK VALLEY**  
**QUILTERS GUILD**

presents its annual quilt show

**Starstruck**

September 30 & October 1, 2022  
9:00 A.M.-4:00 P.M.

Hope Community Church  
11 Hale Street, Newburyport, MA

- Over 150 quilts on display
- Professionally judged
- Penny raffle
- Silent auction
- Vendors
- Handicap accessible
- Ample parking
- Handmade boutique
- Food



To view our 2022 raffle quilt and purchase raffle tickets, go to:  
[mvquilters.org/current-raffle-quilt](http://mvquilters.org/current-raffle-quilt)  
or scan the QR code



[mvquilters.org](http://mvquilters.org)



Dear NBQA Members,

I want to send a BIG THANKS to all the NBQA members for all the support and love you have given to me as your president these past 4 years. At the May general membership meeting I ended my 4 years as the Narragansett Bay Quilters Association President, and was presented with a beautiful quilt constructed with blocks made by members as a gift of appreciation for my service. This is truly a friendship quilt! Can you imagine, for the first time in my life I was speechless. I have been so blessed to have led this wonderful organization, filled with so much love, support, talent and friendship. I am surely now wrapped with love. If I missed any officer or committee chair to personally thank for your service, please touch base with me.

I thank both my boards and committees who served during my 4 years. Your support, knowledge and friendship guided me through these difficult years of Covid, keeping our great guild together, and making it stronger. I thank you so much. I could not have done this without all of your support.

This was a wonderful surprise and tribute to start my 65th birthday week too. It can only get better... love you all my NBQA friends. I am truly blessed. Cannot wait to serve you in my new roll as Chair of the Board and Co chair of the *Comfort Quilts* committee. It will be so much fun. Please support our new President, Gail Macera, by volunteering to serve on a committee. There are so many great things coming to NBQA with her leadership. Become involved!!! Remember, we all make NBQA GREAT!

Keep calm and quilt on.  
Support NBQA, be Involved...

Love you all, and thanks again.  
It has been a pleasure  
and joy to serve you!

Geri Bergreen  
President  
NBQA  
2018-22



## SUMMER CHALLENGE

Don't forget the summer challenge quilts are due at the September meeting. We are making quilt tops for *Comfort Quilts* out of specially curated fabric packs. We will vote for our favorites at the September meeting, and the top 3 vote getters will get cash prizes.

Joan Potter

## COMFORT QUILTS

As we transition committee chairs over the summer, please feel free to reach out to one of us if you have any questions, have finished comfort quilts or need any new kits. We are working to pick up fabric, batting and kits from Brenda and Linda from inventory that we have. We are also setting up a schedule of upcoming *Quilt-A-Thons*, and working on some fun and exciting projects.

So we hope you are working on your *Summer Challenge* with the bag of fabric goods you received at the May meeting. If for some reason you didn't receive a package of material, please feel free to use some of the stash you just were not sure you would ever use. It can finally go to good use making a comfort quilt. It may be featured at the December *Education/Comfort Quilt Exhibit* in December, 2022 at the main branch of the Cranston Public Library, and then given to the needy. Voting for *Summer Challenge* favorites will also be held at the September 2022 general meeting.

Thank you so much Brenda and Linda for all your work throughout these past years; for guiding NBQA to be a visual presence through the donation of many, many quilts made by our members to so many worthwhile organizations. The recipients are truly wrapped in warmth and love.

---

Help make quilts for charities!

The *Comfort Quilts* Committee

Geri Bergreen

Barbara Hartford

Gail Macera





## **RAFFLE QUILT**

The raffle quilt "Sea Stars" is currently at Louise's shop *Island Creations*. Raffle tickets were distributed at the May meeting. Return sold and unsold tickets in September to Joan Potter. We will be displaying the quilt and selling tickets at our Fall Quilt Show. Directions for making 4" Maple Leaf blocks for our next raffle quilt are in this newsletter. Blocks are due at the October meeting. If you have any questions about making the blocks please contact Joan Potter at [joanpotter1@cox.net](mailto:joanpotter1@cox.net). -Joan Potter

## **QUILT SHOW "HARVEST OF QUILTS" OCTOBER 14 AND 15, 2022** **UNITED METHODIST CHURCH, EAST GREENWICH, RI**

The quilt show application is included in this newsletter. If you want your quilt(s) judged, you must mail your application(s) to Diane Roberts before August 12 (her address is on the form). Judging will be done at Exeter Public Library on August 27. You will need to get your quilt(s) to Pat Harrison in advance. Instructions are on the show application. There is a \$5 judging fee per quilt. Forms for non-judged quilts can be mailed or brought to the September meeting. We are limiting submissions to 4 per person, and ask that you indicate your priority for each quilt on the form, in case we don't have room for all. The sign-up sheet for volunteering at the show will be at the September meeting. We need many volunteers, and friends and family are welcome to join us for setup and take down. Many volunteer positions are seated for those who can't be on their feet for long periods. At the September meeting we will be collecting 4" mug mats to be given out at the show. We are also collecting completed raffle baskets or items to be put in a raffle basket at the September meeting. The basket raffle at the quilt show will be a fundraiser for our guild, so make a basket or donate items for one. They do not have to be quilting-related. Print down a flyer from this newsletter to hang in your local shop, library or church. Let all your Facebook friends know about the show. Any questions can be addressed to [joanpotter1@cox.net](mailto:joanpotter1@cox.net).

Thanks!  
Joan Potter

## **What did you do on your Summer vacation.....?**

If you would like to share, please submit your vacation stories from this Summer of 2022. They will be included In the September/October 2022 NBQA Newsletter. Please send to Paula Weston at [pweston528@gmail.com](mailto:pweston528@gmail.com) .

## 2025 NBQA Raffle Quilt Instructions

Timna Tarr's **Mass Maples** (used with permission)

For this quilt we need 287 classic maple leaf blocks,. Finished size is 4 1/2". The stem portion is paper pieced. The pattern was previously published in the Oct/Nov 2014 issue of *Quilter's Newsletter Magazine*.

### Colors

Timna suggests using complementary colors for the leaf and background fabrics, including secondary and tertiary colors. Complementary colors are opposed to each other on the color wheel. Secondary colors are: orange, purple and green. Tertiary colors are the colors between the primary and secondary colors: red-orange, yellow-green, blue-violet, etc. You can Google "color wheel" if you don't have one, to see which colors are complementary. **Please make 4 or more blocks** using different color combinations, and feel free to get creative. Any leftover blocks will be used to make mug mats for the next quilt show.

### Block Construction

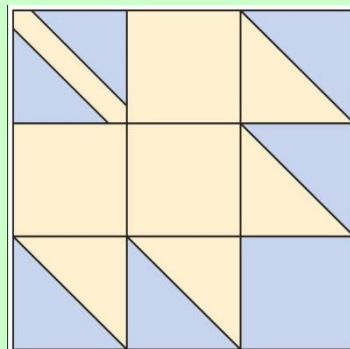
For each block, cut (1) 2" square of background fabric, and (3) 2" squares of leaf fabric. Cut (2) 2 3/8" squares of background fabric and (2) 2 3/8" squares of leaf fabric for the half square triangles. Layer (1) 2 3/8" square of background fabric over (1) 2 3/8" square of leaf fabric right sides together. Draw a diagonal line corner to corner, then stitch 1/4" away from both sides of the diagonal line. Cut in half along the line, and press open, with seam allowance towards the dark side. Repeat to make 4 half square triangles.

Draft a pattern for the stem. Draw a 2" square. Draw a line diagonally across the center, then draw a line 1/8" from each side. Erase or ignore the center diagonal line. The 1/4" section down the middle is the stem, and the triangles on each side are the background. Label the stem piece 1, and the triangles piece 2 and 3. To construct the stem square using the David Sirota method, crease the paper toward you (pattern facing right side up) along the lines between 1 and 2 and 2 and 3. Cut a 3/4" x 3 1/4" rectangle of leaf fabric. On the back of the pattern, center the stem piece over the area for piece 1, right side up, wrong side towards the paper. Pin in place or use a small dot of a glue stick to hold it. Fold back the paper along the crease between piece 1 and piece 2. Align the background fabric right sides together with the raw edge of piece 1. Make sure you have at least 1/4" seam allowance, and that piece 2 is completely covered by the background fabric, then stitch along the crease, all the way to the edge of piece 1. Open up the paper and fold the background fabric open. Press the seam and trim the background fabric generously around piece 2. Secure piece 2 in place with a pin or dot of glue stick. Repeat steps for piece 3, again using the background fabric. Using a rotary cutter and ruler, trim the square along the paper edge to 2" square. Remove the paper. You can use the same paper to piece additional blocks.

Assemble the Maple Leaf Block according to the diagram.  
Block should measure 5" square with the seam allowance.

Turn completed blocks into Joan Potter at the  
October 2022 meeting, or mail to her at  
264 Sutton Avenue, East Providence RI 02914.

Thanks!



<https://www.google.com/url?sa=i&url=https%3A%2F%2Fwww.allpeoplequilt.com%2Fquilt-patterns%2Fquilt-blocks%2Fmaple-leaf-quilt-block&psig=AOvVaw3UXLsFjxi-39ijdr-uwK18&ust=1649438338952000&source=images&cd=vfe&ved=0CAcQjRxqFwoTCJjKuuO6gvcCFQAAAAAdAAAAABAD>



**NARRAGANSETT BAY QUILTERS' ASSOCIATION**

**QUILT SHOW**


**HARVEST OF QUILTS  
2022**



**FRIDAY OCTOBER 14, 10am-4pm**

**SATURDAY OCTOBER 15, 10am-4pm**

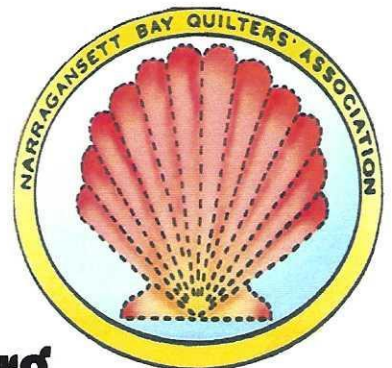
**UNITED METHODIST CHURCH  
of EAST GREENWICH, RI  
1558 SOUTH COUNTY TRAIL  
ROUTE 2**



**QUILTS GALORE  
THEMED RAFFLE BASKETS  
RAFFLE QUILT  
VENDORS  
QUILTING EDUCATION AND  
MEMBERSHIP SPECIAL EXHIBIT**

**ADMISSION \$5.00  
CHILDREN FREE WITH ADULT**

**[www.nbqa.org](http://www.nbqa.org)**





## **PLEASE MEET SUE CORTESE, OUR “HARVEST OF QUILTS” SHOW JUDGE!**



I am originally from Buffalo, NY. I learned to quilt while living in Green River, Wyoming, now in Holland, Michigan. I started quilting in 1995. Like most quilters, I started off making traditional quilts. However, I always tried to put a personal spin on the pattern, occasionally drawing my own pattern. Learning to hand dye fabric, early on, helped distinguish my quilts from the pack. In 1996, I was asked to be part of an organizing committee for a quilt show from several guilds. I have been an active member of the quilting community since; belonging to different “bees”, guilds, and organizations; attending, and organizing retreats; organizing, taking, and teaching classes; working in a quilt shop; selling my hand-dyed fabrics; organizing, and judging quilt shows. In 2010, a class on improvisational piecing with Nancy Crow pushed me further down that art quilt path. I dye my own fabrics, allowing me to create a wide variety of colors and patterns for my own palette. About two years ago, I had started working with indigo and shibori. Indigo is a natural dye that is well known around the world. Shibori is a Japanese style of dyeing which uses pressure as a resist, keeping dye from getting to the fabric. The two work together beautifully. I have tried many different shibori techniques creating yards and yards of textured fabrics. As far as introducing these fabrics into my work, it is still in an early developmental stage. I have made some pieces as whole cloth work; they are bound, dyed, and then hand quilted. Some pieces are bound, dyed, and incorporated into a piece with improvisational piecing, and machine quilted on my longarm. I am also working on a piece that incorporates the indigo shibori fabric with appliqué. Limiting myself to one set style has always been problematic for me... so I continue to explore!

## The quilt show judging system format for the 2022 “*Harvest of Quilts*” Show is an elimination system with the following awards:

1<sup>st</sup>, 2<sup>nd</sup>, 3<sup>rd</sup> and Honorable Mention ribbons for:

Exemplary Hand Quilting  
Exemplary Machine Quilting – Domestic Machine  
Exemplary Machine Quilting – Track Mounted  
Exemplary Use of Color  
Exemplary Pictorial  
Exemplary Piecing  
Exemplary Applique  
Exemplary Scrap Quilt – 50+ fabrics  
Exemplary Modern Quilt  
Exemplary Wearable Art  
Exemplary Innovative

In addition, a single ribbon will be awarded for:

Exemplary Edge Finish  
Exemplary Miniature  
Exemplary Embellishment  
Judge’s Recognition  
National Association Ribbon of Certified Quilt  
Judges - Award of Merit

### SOME OF THE CRITERIA JUDGES LOOK FOR INCLUDE:

#### WORKMANSHIP:

General Construction: Piecing should be precise, corners matched, and points sharp using appropriate thread type and color. Seams should be secure. Borders should be straight and well executed with no ripples, puckers or stretching. Applique should be securely attached without puckers, using matching thread (unless stitches are decorative). Curves should be smooth, and points sharp, with no shadowing of dark fabrics under light.

Quilting: Stitches should be even and consistent with balanced tension, front and back. No knots, backstitches, pleats or bubbles should be evident. Starts and stops should be unobtrusive. Amount of quilting should be sufficient and appropriate for the design of the quilt top, with the consistency of quilting stitches reasonably maintained throughout.

Finishing: Batting should extend to edge of binding with corners neat, well executed and consistent. No wobbles or distortion should be evident on quilt edges. Stitching should be secure.

Special Techniques: Embroidery, embellishments, beading, overlays, trapunto, photo transfers, etc. should be secure, neat, effectively executed, and appropriate to the design.

#### DESIGN/APPEARANCE:

Unity and Design Elements: Design of the top, quilting, fabric choices, sashing, borders, imagery and finishing should be well planned and integrated. Line, shape, color, texture and value should be effectively used to produce an interesting, balanced and well-proportioned design. Quilting pattern should complement the top design, fill the spaces well, and be consistent in proportion to the top design elements.

General Appearance: Item should be neat, clean, and “show ready” with no visible markings, loose threads, bearding, soil, pet hair, odor or stains. No major distortion or sewing problems should appear on the front and/or back of quilt.



# **2022 NBQA "HARVEST OF QUILTS" QUILT SHOW**

## **NBQA Members Quilt Show Submission of Entry to Show**

### **DEADLINES FOR SUBMISSION:**

**Judged Quilts: August 12, 2022,**

**Non-Judged Quilts: September 15, 2022**

**One form per entry – Please print form single sided! Submit to Diane Roberts at a meeting or mail to:**

**Diane Roberts    119 Dana Street, Woonsocket, RI 02895                      Cell: 401-862-5786**

Work previously shown at an NBQA show is ineligible except by invitation. Submitted quilts must be made by NBQA members. The NBQA Quilt Selection Committee reserves the right to accept or reject items. Limit four (4) submissions per member. Please rank your entries according to your priority in the designated area of the registration form.

**Two (2) color photos** must be attached to each entry form, with the name of the quilt and the maker on the back of each photo.

If quilt is made from a published pattern or is the result of a class, please acknowledge. Please make a copy of each entry you submit so you have a record of what you entered.

A sturdy display easel must be provided by the entrant for framed pieces.

**Each item must have a label that states the quilter's name and the title of the work.** If you are unable to submit your work in person, we will accept it from your designee and give that person the receipts you need to retrieve your work.

---

### **JUDGED QUILTS:**

Drop off for judging: August 25, 2022, 4:00 -7:00 pm or August 26, 10:00 am – 1:00 pm

**Pat Harrison's house, 59 Reuben Brown Lane, Exeter, RI, 02822    Telephone 401-257-5217**

Pick up after judging: August 27, 2022, 3:30pm

**Exeter Public Library    773 Ten Rod Road (Rt. 102), Exeter, RI 02882**

Call Pat with any questions regarding judging.

---

### **ALL SHOW QUILTS:**

Quilt Drop off for show: Thursday, October 13, 2022, 10:00 am – Noon

**United Methodist Church, 1558 South County Trail, East Greenwich, RI 02818**

Quilt Pick Up after show: Sunday, October 15, 2022, 4:45 pm after take down

**United Methodist Church, 1558 South County Trail, East Greenwich, RI 02818**

Take a number and you will be called when take down is completed. If someone other than you is picking up your quilts, they will need a note to the committee along with your receipts. The committee will be available until 5:30 pm to return your work. If any item is not picked up by that time, it is the responsibility of the owner to contact Diane at 401-862-5786 to arrange retrieval

**NBQA Members Quilt Show 2022 REGISTRATION FORM**  
**(One form per Entry-Print single sided)**  
**October 14 and 15 at United Methodist Church**

Quilt Maker's Name \_\_\_\_\_ Phone # \_\_\_\_\_

Quilted By \_\_\_\_\_ Domestic \_\_\_\_\_ Long Arm \_\_\_\_\_ Hand \_\_\_\_\_

I am submitting this work for judging YES \_\_\_\_\_ NO \_\_\_\_\_ If yes, include \$5 per entry (by check to NBQA)

\_\_\_\_\_ Large (over 60" on longest side)

\_\_\_\_\_ Medium (between 36" - 60" longest side)

\_\_\_\_\_ Small (up to 36")

\_\_\_\_\_ Clothing/Accessory

Title of Work \_\_\_\_\_

\_\_\_\_\_ Traditional Pattern    \_\_\_\_\_ Original Design    \_\_\_\_\_ Published Pattern

Credit Published Pattern Source \_\_\_\_\_

Size (must be provided): Width \_\_\_\_\_ Length \_\_\_\_\_ Year Completed \_\_\_\_\_

Techniques (circle all that apply) Applique/Piecing/Embellishment/Embroidery/Other \_\_\_\_\_

**Entry Priority Assignment**

We reserve the right to limit submissions due to space limitations. Please rank your submission in your preferred order for display from 1 to 4, with 1 being the highest priority. **Priority** \_\_\_\_\_ (1 to 4)

**Description:** in 35 words or less, write what you want viewers to know about this quilt such as your motivation, the techniques used and/or any personal history you wish to share.

---

---

---

---

**Please complete the forms below. Do not detach.**

\*\*\*\*\*

**2022 NBQA Quilt Show Entry**

Name \_\_\_\_\_

Item Name \_\_\_\_\_

\_\_\_\_\_

Phone Number \_\_\_\_\_

Thank you for submitting an entry.

**2022 NBQA Quilt Show Quilt Receipt**

Name \_\_\_\_\_

Item Name \_\_\_\_\_

\_\_\_\_\_

This receipt must be shown to claim your

entry after take down October 15.



**Attach two (2) photos here: Show full view of quilt. Please, no photos larger than 4" X 6". Please have good color representation, and write your name and the item name on the back of each photo.**

Your Name \_\_\_\_\_

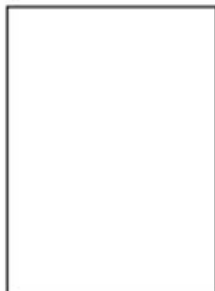
Title of Work \_\_\_\_\_

I am submitting this work for judging: YES \_\_\_\_ NO \_\_\_\_ Fee enclosed \_\_\_\_ (\$5 each – by check to NBQA)

I grant NBQA permission to use a photo of this quilt on its website: YES \_\_\_\_\_ NO \_\_\_\_\_

Size : Width \_\_\_\_\_ Length \_\_\_\_\_

Draw an X in the box below to indicate the orientation your quilt should hang:



**To be completed by NBQA quilt show committee:** Catalog Number \_\_\_\_\_

## NBQA MEMBERSHIP APPLICATION - September 1, 2022 - August 31, 2023



### ALL MEMBERS:

- Receive a membership list & membership card which may entitle the member to discounts at local quilt shops.
- Receive five bimonthly newsletters via email & summer edition. \* May submit quilts to the biannual quilt show.
- Access to NBQA Facebook page. \* Participation in Fabric Challenges and Mystery Quilts.

FULL MEMBERS – GUILD LIMIT 250 FULL MEMBERS	ASSOCIATE MEMBERS
<ul style="list-style-type: none"><li>• May attend all meetings.</li><li>• May enroll in all workshops and trips.</li><li>• New full members will receive a name pin to wear to meetings.</li></ul>	<ul style="list-style-type: none"><li>• May attend 2 meetings per year.</li><li>• May be wait listed for unfilled workshops and trips.</li><li>• Will be given a priority position on the waiting list for full membership.</li></ul>

**Membership dues are not prorated for a partial year.**

Bring this completed form with cash/check to a meeting or mail this completed form with a check made out to NBQA.

(DO NOT MAIL CASH) to: **Anne Sabatini, 61 Plaza Street, Cranston, RI 02920**

- ☐ I AM A CURRENT MEMBER RENEWING MY MEMBERSHIP (Payment due by July 1, 2022)
- ☐ Full membership \$35.00 (check enclosed if mailed) ☐ Associate Membership \$15.00 (check enclosed if mailed)
- ☐ I AM A NEW MEMBER
- ☐ Full membership \$35.00 (check enclosed if mailed) ☐ Associate Membership \$15.00 (check enclosed if mailed)
- ☐ MAIL MY MEMBERSHIP LIST TO MY HOME ADDRESS (include an Additional \$3.00 for postage).
- ☐ MAIL A PAPER COPY OF THE NEWSLETTERS TO MY HOME ADDRESS (include an Additional \$20.00 for printing and postage).

### PLEASE PRINT CLEARLY – ESPECIALLY THE EMAIL ADDRESS AND EMERGENCY CONTACT INFORMATION

MEMBER NAME \_\_\_\_\_ DATE \_\_\_\_\_

#### ADDRESS

STREET \_\_\_\_\_

CITY \_\_\_\_\_ STATE \_\_\_\_\_ ZIP \_\_\_\_\_

EMAIL \_\_\_\_\_ PHONE \_\_\_\_\_

#### EMERGENCY CONTACT

NAME \_\_\_\_\_ PHONE \_\_\_\_\_

RELATIONSHIP TO YOU \_\_\_\_\_

What type of programs or speakers would you be interested in? \_\_\_\_\_

MEMBERS: Would you like to help by working on a committee?

Please check your choice(s) and the appropriate committee chairperson will contact you.

- ☐ Hospitality ☐ Door Prizes ☐ NE Quilt Museum ☐ BOM/Strip Exchange ☐ Programs ☐ Comfort Quilts
- ☐ Membership ☐ Publicity ☐ DVD Library ☐ Newsletter ☐ Quilt Show ☐ Educational ☐ Historian

Other: \_\_\_\_\_

#### To be completed by NBQA.

Amount Rec'd \_\_\_\_\_ Check# \_\_\_\_\_ Paper copy of newsletter \_\_\_\_\_ (\$20.00 fee) Booklet mailed \_\_\_\_\_ (\$3.00 fee)

**PHOTO/VIDEO RELEASE FORM:** I hereby give permission for images of me and my quilts, captured during NBQA events through video, photo and digital camera, to be used solely for the purposes of the NBQA promotional material and publications, and waive any rights of compensation or ownership thereto.

Signature: \_\_\_\_\_ Date: \_\_\_\_\_





Narragansett Bay  
Quilters' Association  
PO Box 614  
East Greenwich, RI 02818  
[www.nbqa.org](http://www.nbqa.org)

**THE NEW ENGLAND QUILT MUSEUM**  
**18 Shattuck St, Lowell, Massachusetts 01852**  
**phone: 978-452-4207**



**By car:**

Lowell is located 28 miles north of Boston off Interstates 93 and 495 and Route 3. From Route 3 take exit 30B northbound or exit 30A southbound onto I-495 towards Lawrence. From I-495 take exit 35C onto the Lowell Connector. Continue about 2 miles to Exit 5B onto Thorndike St.

At the 4th light, Thorndike Street merges into Dutton Street. Go to the 2nd light and turn right onto Market Street.

*The museum's changing exhibitions, Brown Bag Lectures, gallery talks, and special events are updated weekly at [nequiltmuseum.org](http://nequiltmuseum.org).*