

The NIMBLE THIMBLE

www.nbqa.org



PRESIDENT'S MESSAGE

Why does NBQA support the New England Quilt Museum? It's a long drive, who knows what it does, and it always wants money. Why should we care?

Our Guild was one of the founding members in 1987. No place besides a museum could possibly house its more than 400 quilts in the permanent collection. There are also sewing machines, textiles, and sewing items relating to quilting history.

Need an antique or out of print book? It has over 5000 books and more than 100 videos. Members can use the lending library and ask an expert about a pattern of interest. If you have inherited an old quilt, once a month you can make an appointment and, for \$15, they will photograph your quilt, do documentation procedure and research it.

Like more modern stuff? Their exhibits are up for about 3 months at a time. Their exhibits are beautifully presented and there is a fabulous place to eat lunch across the street. March-May, 2015 will have 'Quilts for Change: Advocacy Quilting'. Ever since I contributed a square to the AIDS Quilt and saw it filling an entire gym, I realized how powerful quilting can be.

On Feb. 5, 2015, Nancy Halpern will give a brown bag lunch talk on the newest quilts in the collection (free with your admission). And then, one of my all time favorite quilters, Caryl Bryer Fallert, will have a retrospective on display from August-October 2015. I know that seeing those quilts in person will be ever so much better than all the photos I've admired in magazines all these years.

And then there's the shopping! The Museum Store has books, fabric, and locally made gift items. And if this and lunch hasn't worn you out, The Brush, an Artist's Collective, is about a block away and is free and fascinating.

So I feel that the Quilt Museum is worth visiting and worth supporting. Someone has to do the things they do, and I'm glad they are there.

Warmly,
Hope

NEXT 2 MEETINGS:

**East Greenwich United
Methodist Church**

JANUARY

Jan 15, 2015 at 7:00 PM

Please Bring:

- Your nametag
- Refreshments
- Cash or checkbook to sign up for workshops
- NOTE: No Show & Tell, FQ exchange, BOM or Library/magazines



FEBRUARY

Feb 19, 2015 at 7:00 PM

Please Bring:

- Your nametag
- Show and Tell items
- Fat Quarters for Jan & Feb: Winter holiday theme (Jan) Prints used for landscape (Feb)
- BOM for Jan and Feb
- Refreshments (*if you signed up*)
- Magazines to swap
- Cash or checkbook to sign up for workshops
- Any checked out library DVDs

NBQA Membership Meeting November 20, 2014

President: Hope Barton called the meeting to order at 7:00pm. Hope introduced Judy Chase and thanked her for taking over the Program duties at the last minute from Joan Johnson who was not able to be at the meeting.

Program: Judy Chase introduced the speaker for the evening, Jane Sassaman, speaking briefly of Jane's influence on her quilting. Jane's presentation was entitled "Under the Influence". Always an artist, Jane had a varied career in the design world before she found her favorite medium in fabric and began quilting in 1980. An accomplished Art Quilter and fabric designer, Jane brought several of her stunning quilts including "Life Totem" and "Season Cycle: Spring Tree" for us to view. Jane talked about the influences on her style from the Arts and Crafts movement and Art Nouveau artists including William Morris, Alfons Mucha and others. Using photos of her quilts and family, Jane illustrated the evolving designs of her lovely quilts, including "Willow" which was named one of the 100 Best American Quilts of the Century.

Announcements: Susan Chace announced the Fabric for the 2016 Challenge. Some of the fabric was available for purchase at the BOM table, which also had sign-up sheets for the trip to Somers, NY and the MA shop hop.

Break for Refreshments

Treasurer: The October Report on income and expenses was given.

Block of the Month: Blocks were won by Dottie Colvano

Challenge Fabric 2016: 20 yds sold out. Susan will bring more fabric to the next meeting.

Secretary: October minutes accepted with no changes

Newsletter: Sara Crocker informed the membership that each newsletter cost NBQA \$2.50 for printing and mailing, or about \$10.00 annually. Sara asked that those members who are able to receive an electronic copy of the newsletter consider taking their names off the list of those to whom it is mailed.

Fat Quarters: Black, white and grey were the colors this month

Door Prizes: were given out

Hospitality: Peggy announced that the January meeting refreshments would be the usual desserts and snacks. The fall table decorations were distributed to the winners.

Show and Tell: We saw some lovely quilts and Mayfair Hall showed us the beautiful ribbon work she made and spoke about wanting to incorporate her ribbon art into quilts.

The meeting adjourned at 8:52

Submitted by Susan Chace, Co-Secretary

ARTICLES OF INTEREST

Quilt Tips From Quilters Around The World

<http://www.blockcentral.com/tips.shtml>

This website has pages of quilt tips on different topics collected from all over the world. Here is a sample from the "organization" page:

Sewing all day can lead to millions of little threads on the floor. I put two lint rollers on a paint roller and attached an extension handle. I run this over the carpet, and it's tidy for tomorrow! I hang it on a hook behind the door.

- Jacque in California

JANUARY Block of the Month

January – Wild Goose Chase The directions for constructing this 12" block are below and on the website.



Cut two (2) red print 2 7/8 inch squares. Then cut these two squares in half diagonally once to yield four (4) triangles for the outside corners of the block.

Cut eight (8) beige/neutral print 2 7/8 inch squares. Then cut these eight squares in half diagonally once to yield sixteen (16) triangles which will be the "geese".

Cut eight (8) 3 1/4 inch squares of red print (same print as the four corner triangles). Then cut these squares on the diagonal twice to yield four triangles per square and a total of thirty-two (32) triangles which will be used as the "wings" of the beige triangle geese.

Cut one (1) 9 1/4 inch square of dark blue. Then cut this square in half diagonally twice to yield four (4) background or setting triangles.

Cut one (1) 3 3/8 inch square of beige/neutral print for the center square. This piece is the same color as the "geese".

Sew sixteen (16) flying geese which measure 2 inches x 3 1/2 inches unfinished. Sew four (4) geese together to make a unit. The geese unit will point into the beige/neutral center.

Sew a red triangle to the base of the geese unit to make the corner of the block. Repeat for all four geese units/corners of block.

Sew one unit to opposite sides of the 3 3/8 inch beige/neutral center of the block square. Be sure that "geese" triangles point to the center square.

Sew a blue background/setting triangle to both sides of the remaining geese units.

Hint: Sew with background triangle on top. Pin at beginning and end of triangle edge and let your sewing machine feed dogs push the pieces together. There is considerable stretch in the geese unit and bias in the background triangle.

Assemble block in diagonal rows. Refer to picture for placement of each piece throughout the block assembly.

If making 84" x 84" quilt, make 9 for the quilt center. If making 72" x 96" quilt, make 8. If you have any questions, please email me at Louisebpd@yahoo.com.

FEBRUARY Block of the Month

February – Flying Geese Strip. The directions for constructing this 12" block are below and on the website.



Cut two (2) 3 ½ inch x 12 ½ inch strips red (solid red from Kona Cotton used in photo)

Cut four (4) squares 3 7/8 inches square in a neutral background color. The sample used a Moda marble but beige or tan mottled Batik will also work.) Then cut the square once on the diagonal to yield two (2) triangles per square for a total of eight (8) triangles for the block.

Cut one (1) 7 ¼ inch square of red print. Cut on diagonals to yield four (4) large red triangles.

Sew neutral background triangles to large red print triangles to make one flying geese. Make four (4) flying geese for block.

Sew geese together as shown in photo.

Sew one (1) 3 ½ inch by 12 ½ inch strip to each side of flying geese strip to complete block.

If making the large quilts, (84 inch by 84 inch or 72 inch by 96 inch), make twenty (20) Flying Geese Strip blocks for the borders. You can substitute a 3 ½ inch by 48 ½ inch strip for the 84 inch square quilt, or for the 72 inch by 96 inch quilt, substitute a 3 ½ inch by 60 ½ inch strip for the top and bottom and a 3 ½ inch by 72 ½ inch strip for the sides instead of a 12 ½ inch strip in each block. Add to each side of the strip after all flying geese are constructed and sewn together in a long strip.

Another variation for your quilt would be to make each goose in the block a different fabric and repeat for each block or make it completely scrappy! Since it makes the borders it will look awesome!

If you have any questions, please email me at Louisebpd@yahoo.com.

Thanks for participating!

Louise Pankiewicz

Sue's Creations

Susan Ellis
Longarm Machine Quilter



1291 Middle Rd.
East Greenwich, R.I. 02818
(401) 884-6459
sellis1291@verizon.net

Ocean Waves Quilting Company

Pat Harrison oceanwavesqc@verizon.net

Featherweights by Bob

Bob Harrison hfranklin32@verizon.net
401.667.0214

2016 Fabric Challenge Rules

The challenge fabric selected for 2016 is Westminster Fabrics; Kaffe Fassett for Rowan – Millefiore in Red.

- The Fabric will be sold in ½ yard pieces at the general meetings for \$5.00 each or 1 yard pieces for \$10.00 each until all the fabric purchased by NBQA has been sold.
- All current NBQA Members and Associate Members are eligible to participate.
- The challenge fabric must be recognizable on the front side of the finished item, but there is no minimum block size. The challenge fabric must be used within the design, not just as a border.
- All items submitted must be constructed to include three layers (top, batting, back) and be held together with stitching. A qualifying quilted item may include, but not be limited to, quilts, clothing, purses, totes or other accessories, etc.
- The hanging size of the item must be not less than 10" x 10" (or a total of 40") and not larger than 36" x 42" (or a total of 160").
- Completed entries must be brought to the February 2016 general meeting in order to be hung with the other 2016 Challenge entries at the quilt show. All entries must have a completed 2016 Quilt show entry form which will be available on line closer to the date of the Quilt Show. The entries will be displayed during the meeting and the members will vote during the break for a variety of things like best appliqué or most innovative, etc. Each category of entry will be eligible for a ribbon (s). The winners will be awarded at the Quilt Show. If a challenge fabric entry is not entered into the NBQA voting at the February meeting it may still be entered in the quilt show, however, it will not hang with the other challenge entries but in the general part of the show.



NBQA Special Events

The NBQA sponsored bus trip to the Schoolhouse Shop Hop in Massachusetts is on Saturday, March 28, 2015. We will leave the route 117 Park and Ride at 7:30 AM and return by 7:30 PM. The cost is \$45.00 which includes your \$7.00 passport and tote bag, transportation and driver tip. The cost is based on 40 riders for the 52 passenger bus. The \$7.00 tote bag passport must be paid for by January 31st, and the balance is due by March 1, 2015. Shops visited include The Quilted Crow in Boxborough, MA, Cobblestone Quilts in Townsend MA, The Bunkhouse Quilt Shop in Lyndeborough, NH, Quilted Threads in Henniker, NH, and Red Barn Sewing and Yarn Center in Merrimac, MA.

NBQA is sponsoring a bus trip to the Northern Star Quilter's 2015 Quilt Show in Somers, New York on Saturday, May 2, 2015. We will leave the Route 117 Park and Ride at 7:30 AM and stop at exit 1 Park and Ride at approximately 8 AM and return to Warwick by 7:30 PM. On the way home there will be a stop at a quilt shop in Vernon CT. Time is built in for dinner or a snack at one of the eating establishments in the quilt shop plaza. The price for this trip is \$45.00 and includes admission to the show, transportation, and driver tip. Cost is based on 40 riders on a 52 passenger bus.

Contact Louise Pankiewicz, Special Events Chair, to sign up or if you have any questions. Sign up at the January meeting or send a check to Louise in the mail.



Kindred Quilters

*Original sewing patterns for
inspiration and enjoyment*

www.kindredquilters.com

www.kindredquilters.etsy.com

contact us - info@kindredquiltersri.com

Lois Johnsen 401-932-9285

Shari Migdail-Smith 401-580-1583

YOUR FULL SERVICE EMBROIDERY COMPANY



EMBROIDERY SEWING CO.

DENISE C. GREENLUND

PRESIDENT/OWNER

401-397-3582

401-480-6567 - cell

401-397-0777 - fax

embsew@aol.com

74 CLUB HOUSE RD

WEST GREENWICH, RI 02817



FROM THE LIBRARY

Our collection of DVDs is available for members to borrow at our monthly meetings. To check out DVDs, sign the index card in the back of each DVD and give it to the librarian. When returning DVDs give the librarian your name and she will pull your card and check off that you have returned your DVD.

The library will be closed during the January meeting. DVD's due in January will be due in February.

A list of all DVDs in the NBQA library is on the web site <http://www.nbqa.org/resources/dvds/>.

The following titles have been added to the library.

Free Motion Quilting From Frames to Feathers by Leah Day

Skillbuilder Studio, Machine Quilting Vol.1 by Renae Allen

Skillbuilder Studio, Feather Fundamentals – Vol. 2 by Renae Allen

Maria Lage



Gail A. Macera

Certified Cotton Theory Instructor

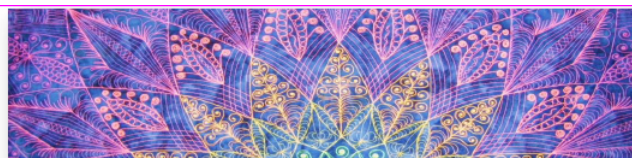
Public and Private Lessons

86 Pheasant Drive

Cranston, RI 02920-1223

Phone: (401)451-0061

gmquilting@cox.net



www.PatFergusonQuilts.com

Author of "Zen Quilting Workbook"

Certified Zentangle Teacher

Longarm Quilting Services, Trunk Shows & Workshops,

Zentangle & Zen Quilting Books & Supplies

Quilt Care & Storage Products, Machine Quilting Tools & Notions

Quilt Hanging Systems

free shipping (within the continental US) on any online order over \$60.00

**THE
QUILT
AND
CABBAGE**



**538 Main Street (Rt. 20)
P.O. Box 534
Sturbridge, MA 01566
(508) 347-3023**

Est. 1991

Quilting Cottons • Batiks
Homespun • Flannels
Woolen Fabric & Yarn
Stencils • Books • Patterns
Custom Quilts
Gift & Specialty Items

Mon., Wed. thru Sat. 9:30-4:30

Sunday 11:00-4:00

Closed Tuesday

Jeanne Molitoris, Owner

Allison Wilbur Quilts

Barrington RI

allisonquilt@me.com

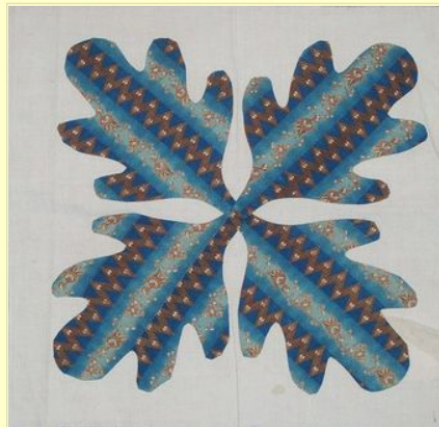
<http://AllisonWilburQuilts.com>

**Professional Longarm Quilting
Teacher - Knit One Quilt Too**

News from the New England Quilt Museum

OPENING JANUARY 14, 2015

A PASSION FOR PRUSSIAN BLUE
Vibrant American Quilts from 1830 to the Present



Oak Leaf print block, c. 1840

Prussian blue, a mineral colorant discovered around 1706, became an important pigment for artists in the 18th century and a low-cost alternative to indigo for coloring textiles in the first half of the 19th century. Fabrics colored with Prussian blue appear most frequently in quilts made in the United States between 1830 and the mid-1850s.

The exhibition highlights the use of this vibrant colorant in textiles of the period, with explanation of the various techniques used to make them in the context of the times.

~ ~ ~

Also, please check out an interesting blog post entitled "TEN REASONS TO VISIT A MUSEUM" at:

<http://colleendilen.com/2009/07/31/10-reasons-to-visit-a-museum/>

As you 'muse' over this list, try replacing 'museum/s' with the New England Quilt Museum.

Chris Bagley

Folk Art Quilts

*Quilting fabrics and supplies
Books, patterns & notions*

Hours: Tues-Sat 10:00-5:00

344 Main St.
Wakefield, RI 02879
(401) 789-5985

folkartquilts@cox.net

Owners
Evie Chermis & Mary Loftis

Blaine's
sewing machine center
family owned for over 60 years
sales and service since 1950

**Where Customer Service
Is 'SEW' Important!**

**Bernina
Babylock
Janome
Elna
Necchi**

401-463-8824
1280 Oaklawn Ave.,
Cranston, RI
www.blainesewing.net
Hours: Tu.-Fri. 10a-5:30p; Th. 10a-8p; Sat. 10a-5p

Piecing with Poppers

Quilting Center

* Longarm Quilting Service
* Fabrics * Classes

74 Nooseneck Hill Rd 401-385-3090
West Greenwich, RI shellshar9@yahoo.com

Sharon Mayers-owner



**Narragansett Bay
Quilters' Association**
PO Box 614
East Greenwich, RI 02818

www.nbqa.org

THE NEW ENGLAND QUILT MUSEUM

18 Shattuck St, Lowell, Massachusetts 01852

phone: 978-452-4207



By car:

Lowell is located 28 miles north of Boston off Interstates 93 and 495 and Route 3. From Route 3 take exit 30B northbound or exit 30A southbound onto I-495 towards Lawrence. From I-495 take exit 35C onto the Lowell Connector. Continue about 2 miles to Exit 5B onto Thorndike St.

At the 4th light, Thorndike Street merges into Dutton Street. Go to the 2nd light and turn right onto Market Street.

NEQM 2015 EXHIBITS

January 14 - April 4

A PASSION FOR PRUSSIAN BLUE

April 9 - July 26

SEASONAL PALETTE

Studio Art Quilt Associates

July 30 - August 16

A SUMMER CELEBRATION OF
NEW ENGLAND QUILTS

The Best of the Region's Quilt Guilds

August 20 - October 31

CARYL BRYER-FALLERT

A Retrospective

November 5 - December 26

SMALL WONDERS

Doll and Crib Quilts